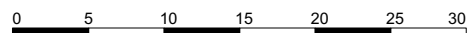
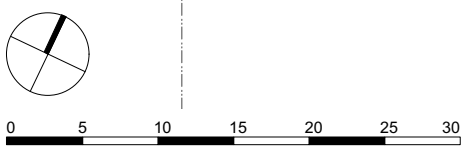
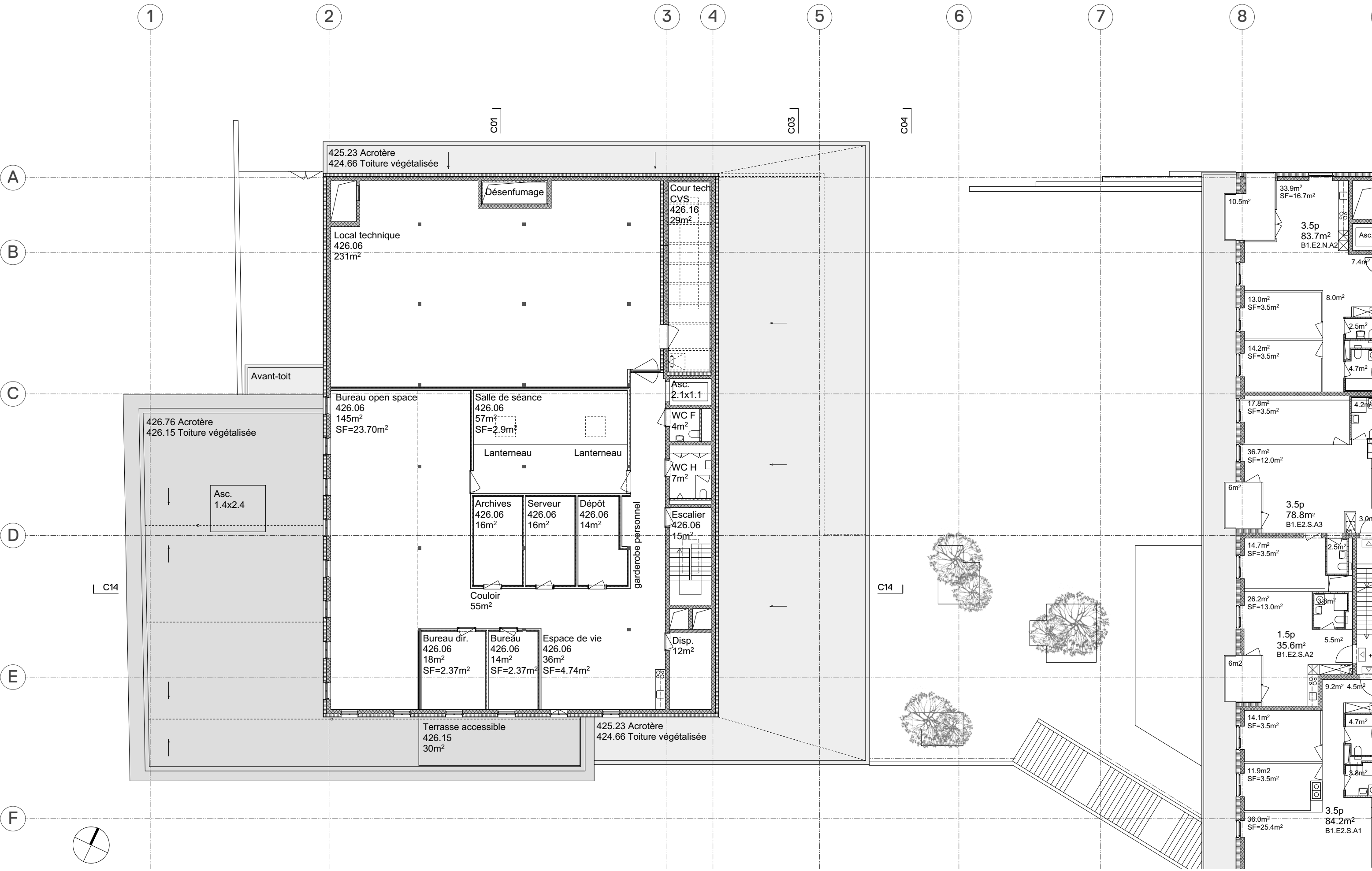


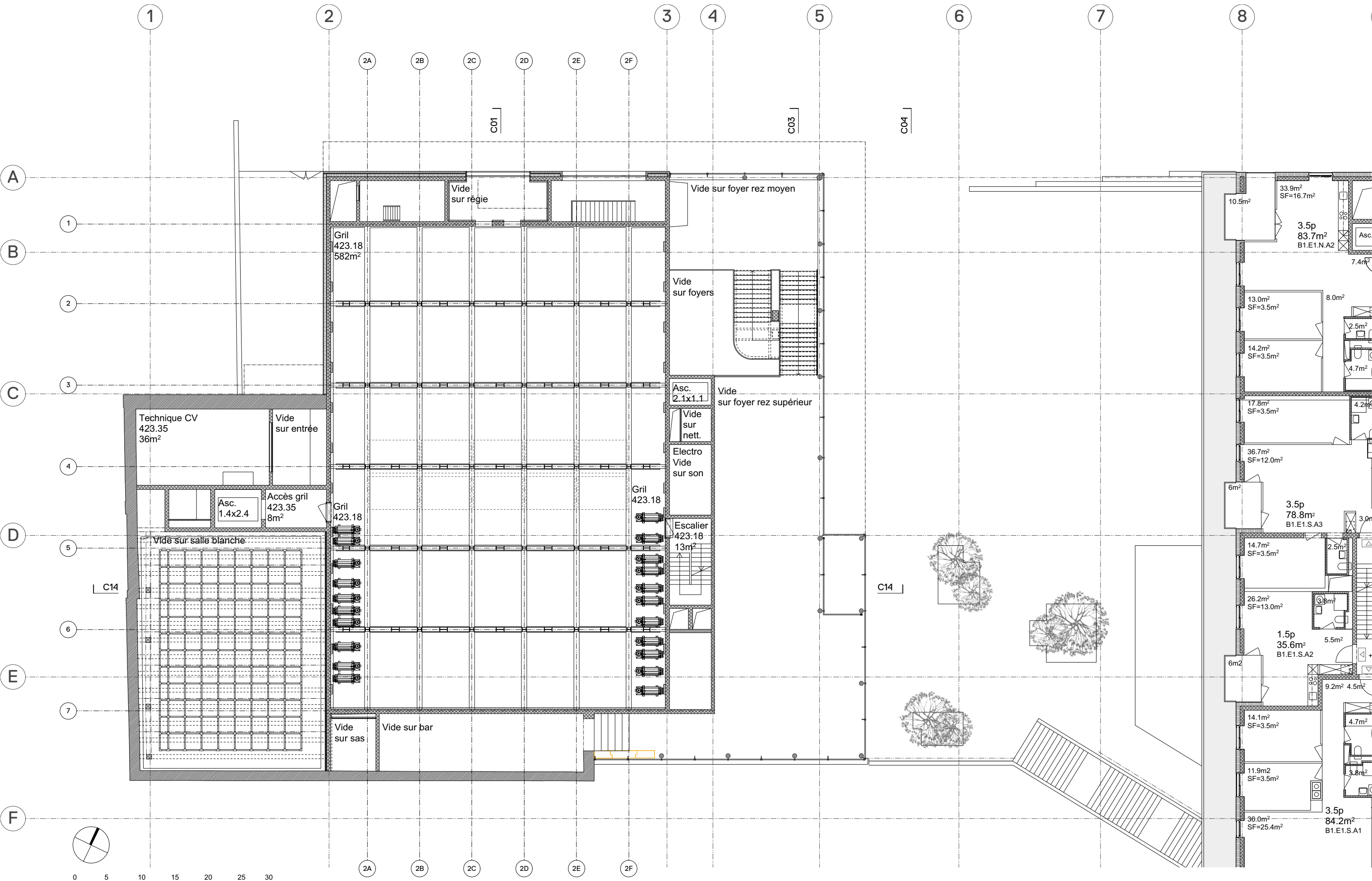
# THÉÂTRE DU JURA

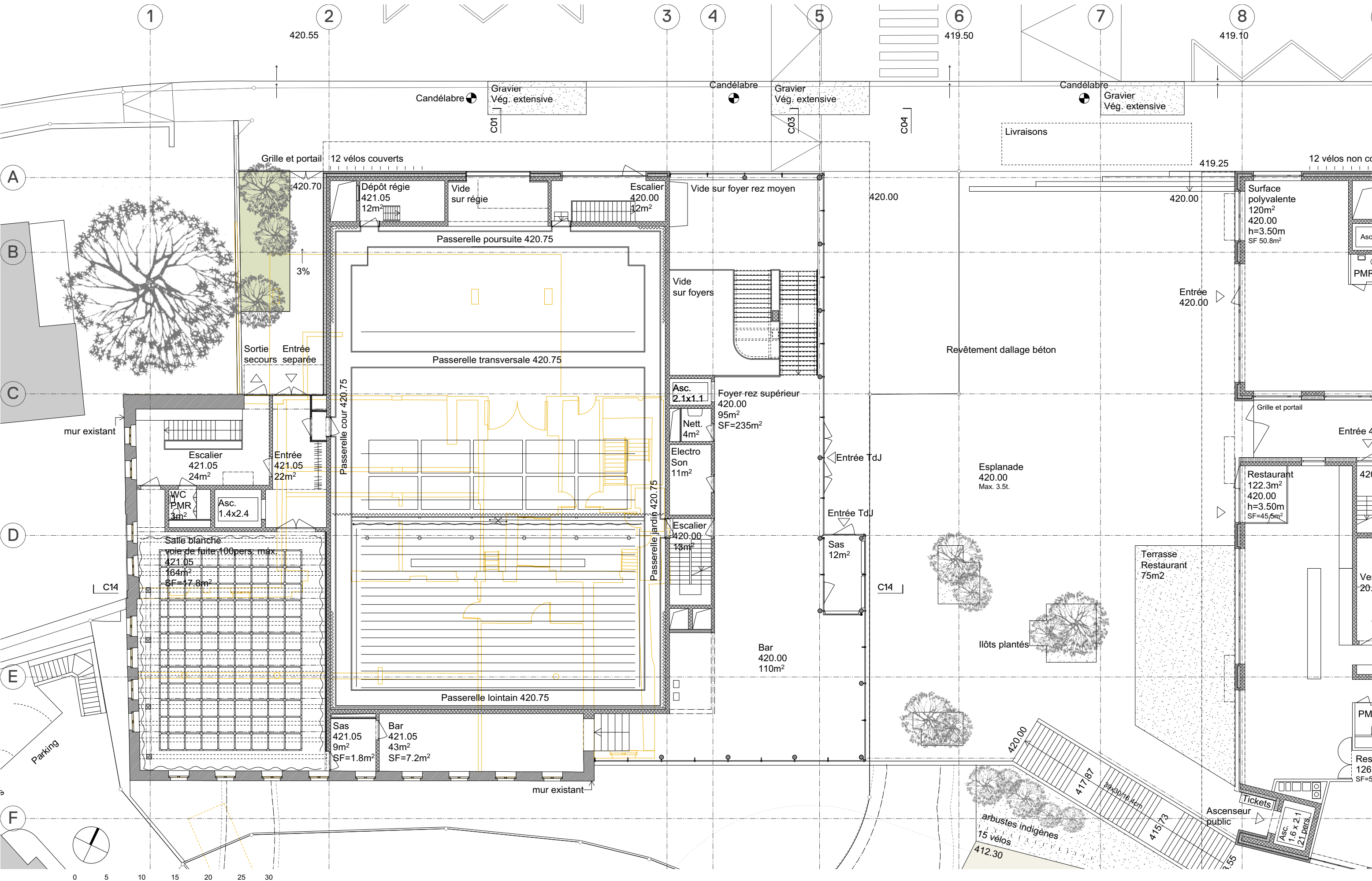
Projet mis à l'enquête le 26 juillet 2018  
Plans, coupes, façades 1:200

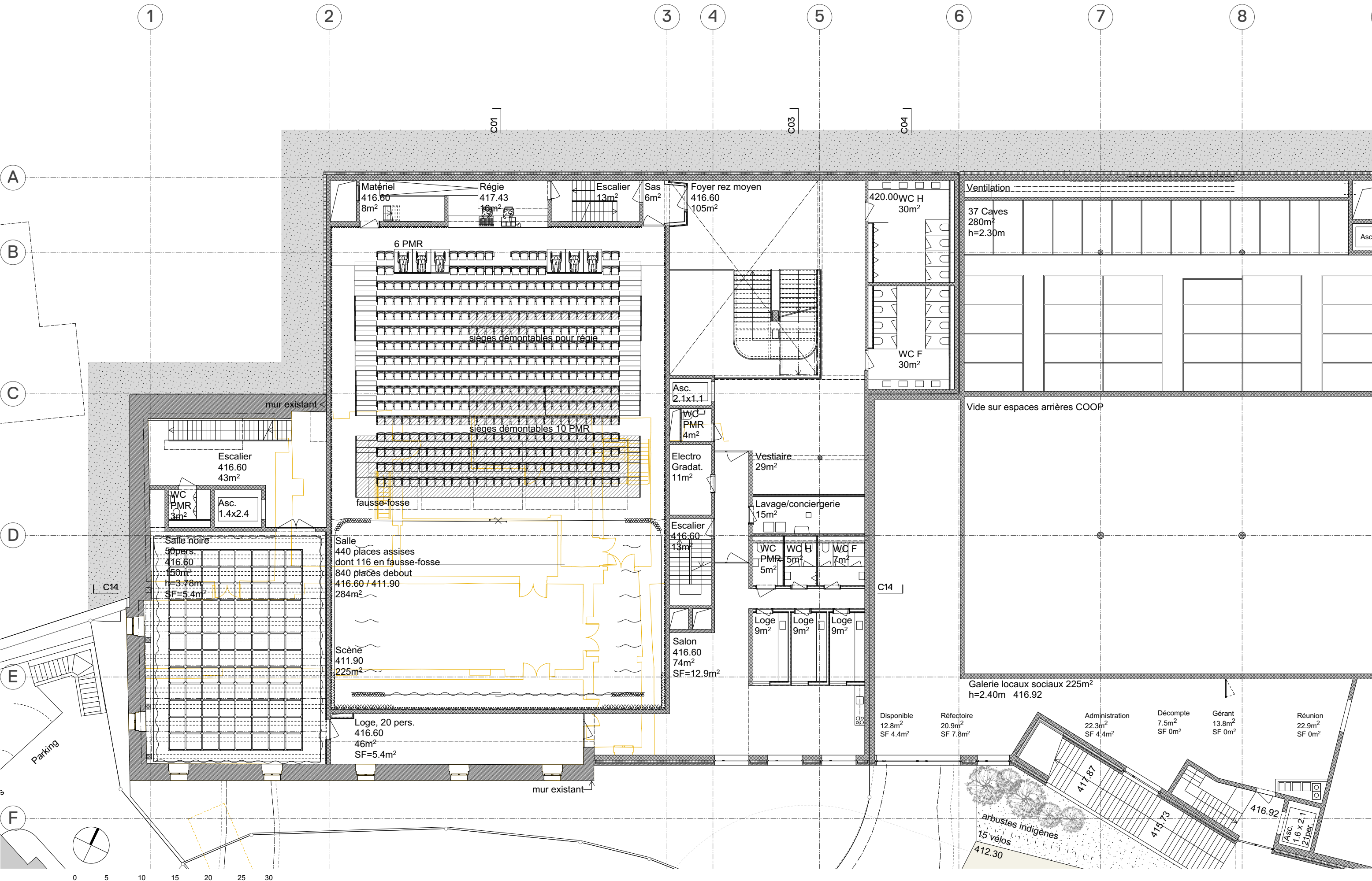












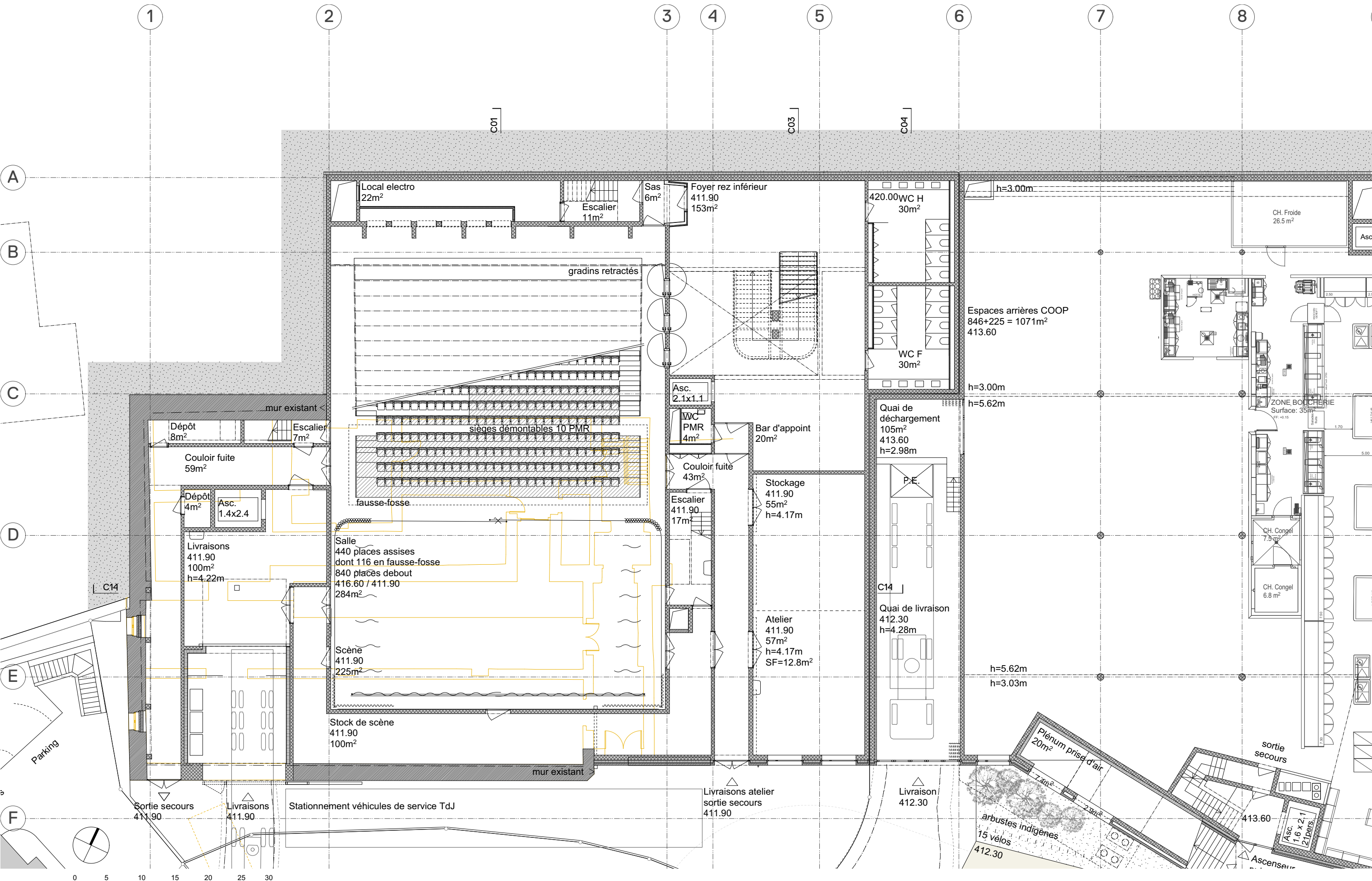
**G**  
 GXM ARCHITECTES SARL  
 DORFSTRASSE 40 / CH-8037 ZURICH

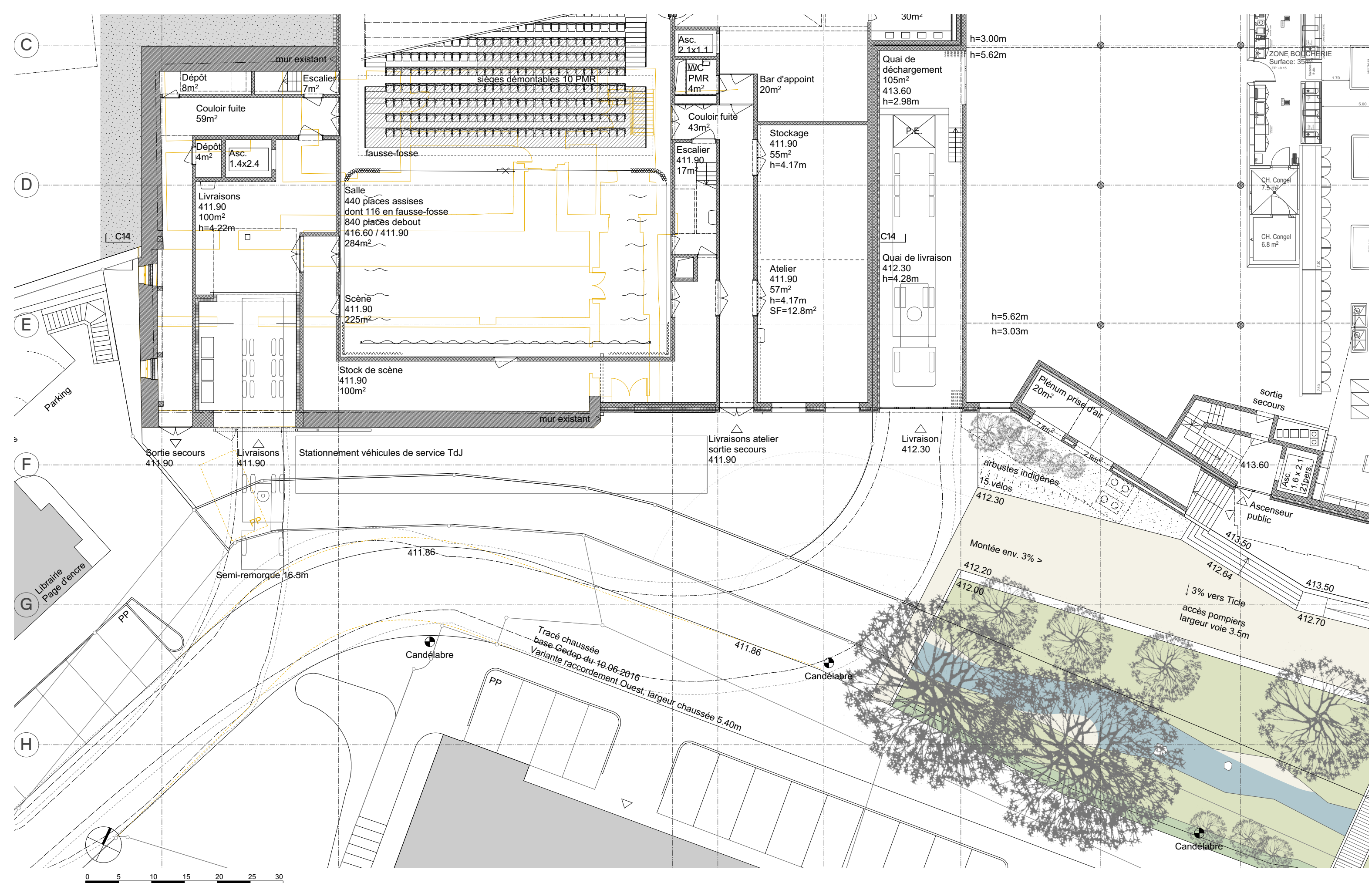
**X**  
 ALEXANDRA GÜBELI / YVES MILANI  
 ARCH. DIPL. EPF SIA

**M**  
 T +41 44 380 79 81  
 INFO@GXM.CH / WWW.GXM.CH

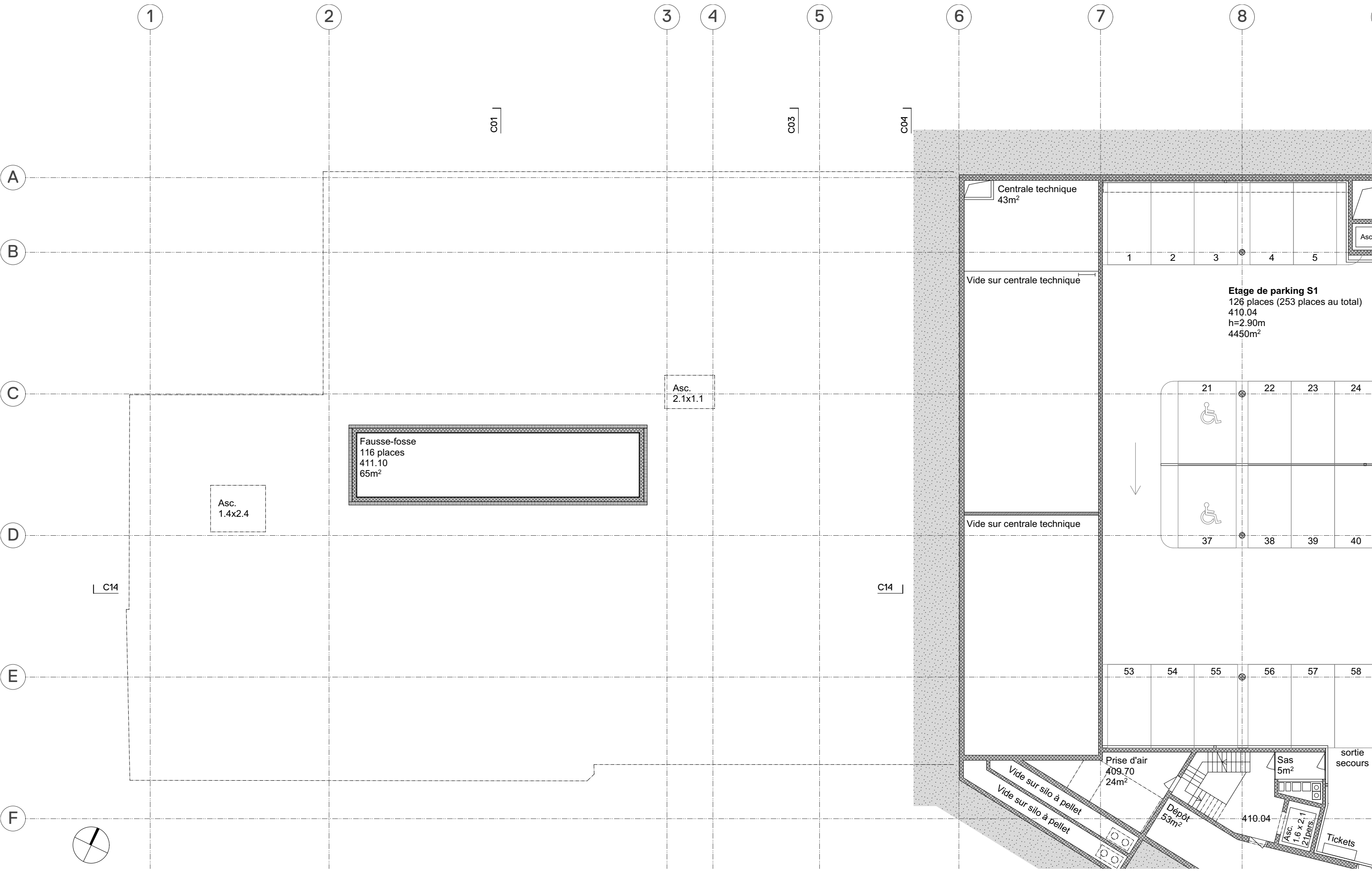
LE TICLE - THÉÂTRE DU JURA, DELÉMONT  
 PHASE : DEMANDE DE PERMIS DE CONSTRUIRE

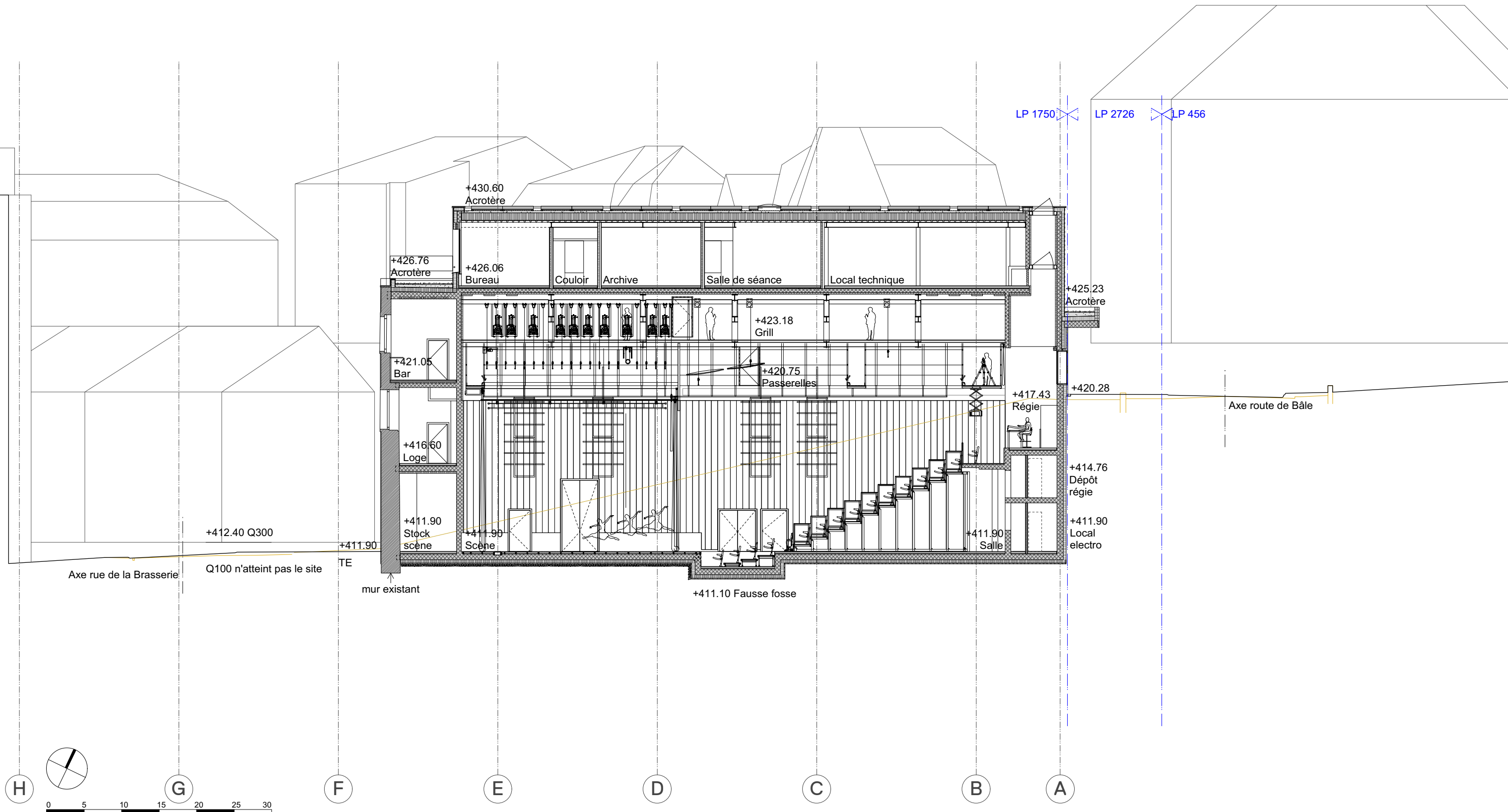
NIVEAU REZ MOYEN  
 DATE: PLANS EN DATE DU 16.07.2018 1:200

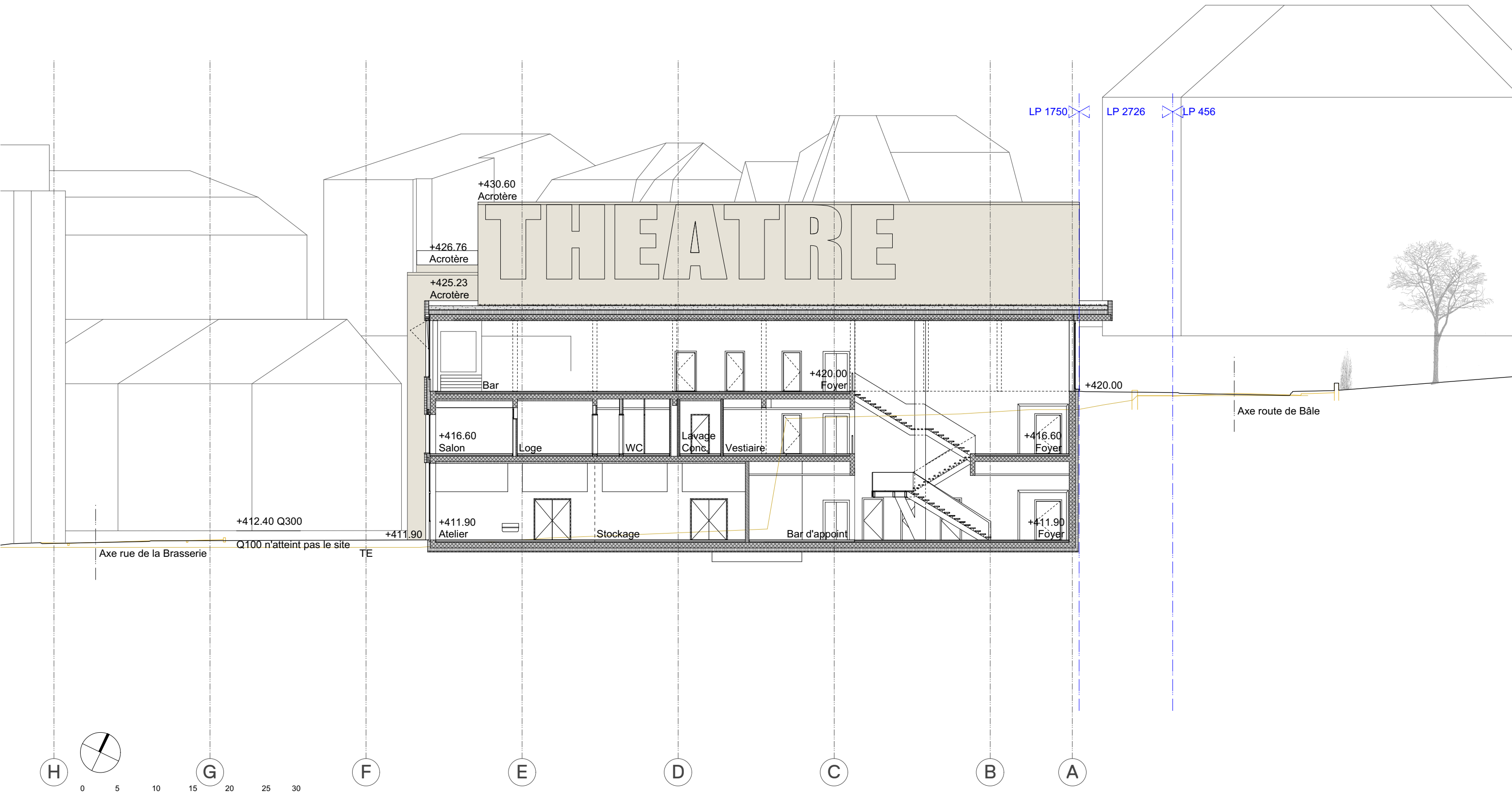












LP 1750 LP 2726 LP 456

Axe route de Bâle

+412.40 Q300

+411.90

+420.00

+430.60  
Acrotère

+426.76  
Acrotère

+425.23  
Acrotère

Bar

+420.00  
Foyer

+416.60  
Salon

Loge

WC

Lavage  
Conc.

Vestiaire

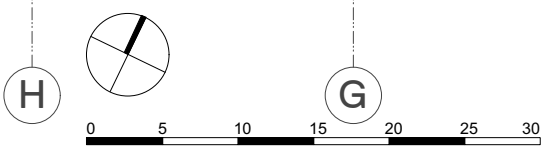
+416.60  
Foyer

+411.90  
Atelier

Stockage

Bar d'appoint

+411.90  
Foyer



**G**  
GXM ARCHITECTES SARL  
DORFSTRASSE 40 / CH-8037 ZURICH

**X**  
ALEXANDRA GÜBELI / YVES MILANI  
ARCH. DIPL. EPF SIA

**M**  
T +41 44 380 79 81  
INFO@GXM.CH / WWW.GXM.CH

LE TICLE - THÉÂTRE DU JURA, DELÉMONT  
PHASE : DEMANDE DE PERMIS DE CONSTRUIRE

C03, FOYERS  
DATE: PLANS EN DATE DU 16.07.2018  
1:200

